
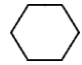

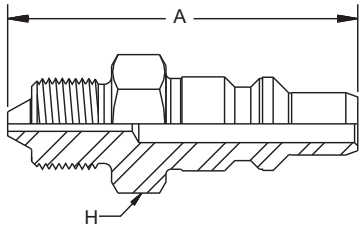
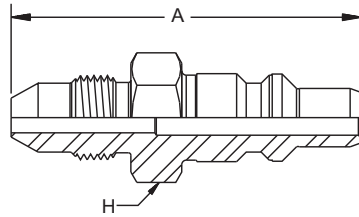


HP006
Nipple
Without Check Valve

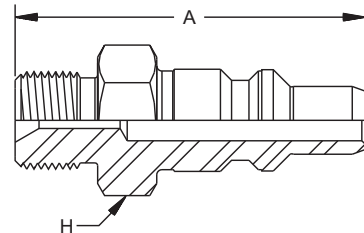
Part Number	Connection Type	A Overall Length	H Hex Size	Maximum Working Pressure
#				
		inch	inch	psi
HP006-1-A9	Type "M" (9/16" - 18 threads)	1.98	0.75	30,000
HP006-1-A12	Type "M" (3/4" - 16 threads)	2.16	0.87	30,000
HP006-1-HM4	1/4" High Pressure Male	2.25	0.75	30,000
HP006-1-LM6	3/8" Medium Pressure Male	2.33	0.75	20,000
HP006-1-LM9	9/16" Medium Pressure Male	2.57	1.00	20,000
HP006-1-NMB	1/4" NPT Male	2.09	0.75	15,000
HP006-1-NMC	3/8" NPT Male	2.13	0.75	15,000
HP006-1-NMD	1/2" NPT Male	2.31	1.00	15,000
HP006-1-X13	Low Angle Face Seal (9/16" - 18 threads)	2.17	0.75	30,000



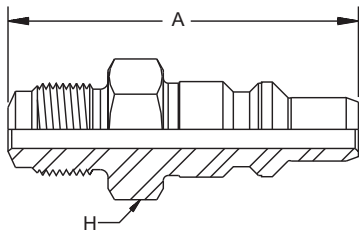
HP006-1-HM4



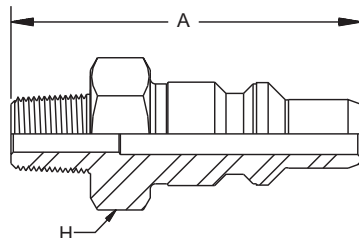
**HP006-1-LM6,
 HP006-1-LM9**



**HP006-1-A9,
 HP006-1-A12**



HP006-1-X13



**HP006-1-NMB,
 HP006-1-NMC,
 HP006-1-NMD**