
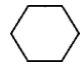

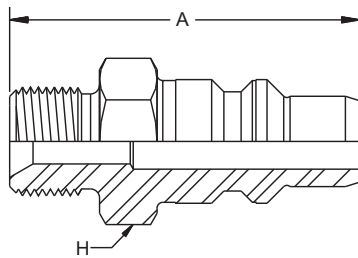


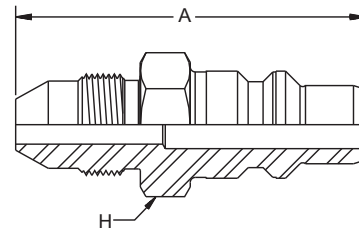
**HP010**  
**Nipple**  
**Without Check Valve**

Part Number	Connection Type	A Overall Length	H Hex Size	Maximum Working Pressure
#				
		inch	inch	psi
HP010-1-A12	Type "M" (3/4" - 16 threads)	2.40	1.06	20,000
HP010-1-A16	Type "M" (1" - 12 threads)	2.53	1.18	20,000
HP010-1-LM12	3/4" Medium Pressure Male	3.12	1.18	20,000
HP010-1-LM9	9/16" Medium Pressure Male	2.84	1.06	20,000
HP010-1-NMD	1/2" NPT Male	2.52	1.06	15,000
HP010-1-X23	Low Angle Face Seal (3/4" - 16 threads)	2.58	1.06	20,000

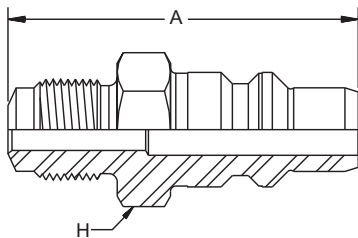
**D**



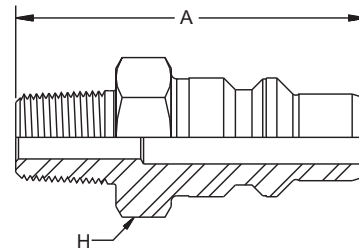
**HP010-1-A12,  
 HP010-1-A16**



**HP010-1-LM9,  
 HP010-1-LM12**



**HP010-1-X23**



**HP010-1-NMD**